

## **AdderView CATxIP 1016 (AVX1016IP-EURO) – KVM over IP KVM Switch von Adder**



### DESCRIPTION:

The AdderView CATxIP 1000 is a high density, small form factor KVM switch available with 8 or 16 ports to provide local, remote and global access for users who need to control multi-platform operating systems and hardware. The CATxIP 1000 combines USB console support, global IP access and a full KVM feature set to create a truly modern KVM switching solution delivering high quality video and CD quality audio. A focus on flexibility means the CATxIP 1000 is equally suited to applications from professional server installations or industrial processes through to office control. The CATxIP 1000 makes full enterprise grade functionality and quality available to everyone in a compact desktop format.

### FEATURES:

#### USB keyboard and mouse control

Any USB style keyboard and mouse (PC, Mac or Sun) can be used to control the AdderView CATxIP 1000 switch. Full keyboard re-mapping is supported to ensure seamless cross platform functionality.

#### Faultless video quality

The AdderView CATxIP 1000 provides exceptionally high video performance to local users, supporting up to 1920 x 1200 resolutions with DDC emulation which is further enhanced by DC balancing to ensure full and true colour.

#### True multi-platform support

The AdderView CATxIP 1000 supports any computer platforms with PS/2, USB and Sun keyboard and mouse interfaces. Country code reporting, DDC and continuous keyboard and mouse emulation ensure faultless operation.

#### Easy cascade

Expand simply by using just CATx cable to link units. The CATxIP 1000 automatically detects cascade connections to support up to 256 computers. Fit 32 performance KVM connections in 1U of rack space.

#### Optional CD quality audio

AdderView CATxIP 1000 switches support CD quality 44.1kHz digital stereo audio when optional audio enabled CAM modules are used.

#### Options port

- Integration with RS232 controlled power switches to provide a complete hard reboot function
- Flash upgrade
- Sync with other CATxIP 1000 switches for multi-video applications
- Upload/download CATxIP 1000 user and host information
- Remote control

#### Global User (IP)

Employing enterprise grade security (using AES 128 bit encryption and RSA 2048 bit public key authentication) Use Java web browser or Real VNC client software that, unlike HTTPS web browsers, is designed specifically for secure, high performance KVM over IP applications

Up to 1600 x 1200 resolutions with scalable windows

#### Computer Access Modules

Flash upgradeable CAMs are available for PS/2, USB and Sun keyboard and mouse support with optional audio.

#### Rack mount / rack drawers

One or two CATxIP 1000 switches can be mounted in 1U of rack height giving a maximum of 32 ports per 1U. The small size also makes the units ideal for mounting behind KVM rack drawers.

#### User access control

Up to 16 different user profiles can be created and access rights for each user can be defined. Embedded KVM option

CATxIP 1000 technology is available without a casing for embedding within other equipment such as rack drawers and industrial equipment through an interconnect header.

#### SPECIFICATION:

##### Video modes

Support for standard PC, Sun and Mac video modes up to a resolution of 1600 x 1200 @ 60Hz. DDC emulation supported via connected Computer Access Modules (CAMs).

##### Hardware compatibility

Video, mouse, keyboard and optional audio support for PC, Sun, Mac, RS/6000, Alpha and SGI computers using PS/2, USB or Sun flash upgradable Computer Access Modules (CAMs).

##### OS compatibility

Operates with all currently known software and operating systems including all Windows versions, DOS, Linux, Unix, BSD, all Sun OS, all Mac OS and NetWare.

##### Local console

Video: HDD15 socket

Keyboard/Mouse: USB type A sockets

Audio: 3.5mm stereo jack

##### Connections

Local console connections as stated above.

CATx computer connections: all RJ45 style.

10/100 auto-sensing Ethernet network port: RJ45.

Power connection: 2.5mm DC jack (5V DC, 2.5A).

RS232 triggered power switching and syncing: DB9 plug

##### Physical design

Compact 1U high metal case construction suited for rack mounting (rack mount kits available).

Width: 198mm/7.92", Height: 44mm/1.76", Depth: 120mm/4.8".

Weight: 0.77kg/1.70lbs.

##### Power supply

Mains adaptor with IEC style power lead (included).

Input: 100-240VAC 0.5A 50-60Hz

Output: 5VDC 2.5A

##### Operating temperature

0°C to 40°C / 32°F to 104°F

##### Approvals

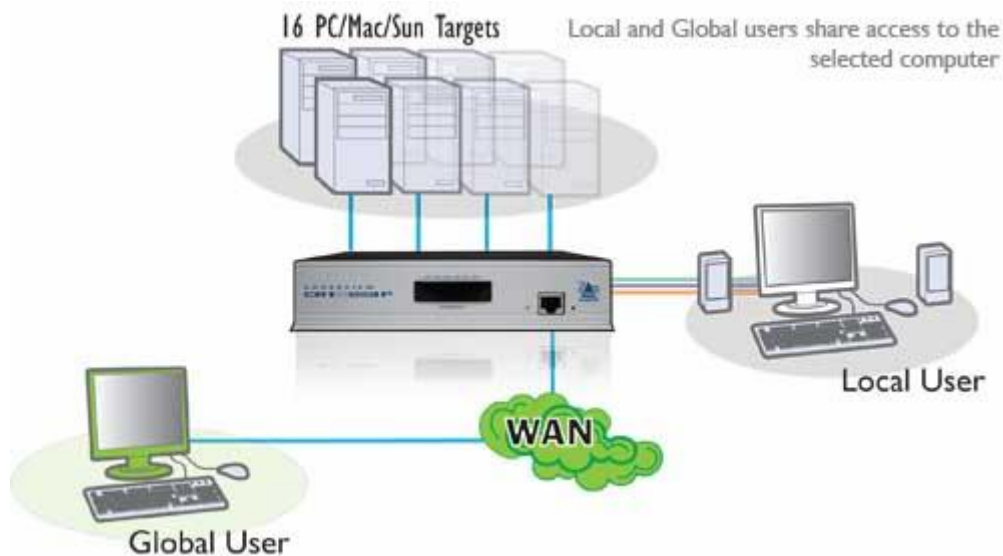
CE, FCC

Artikelnummern:

AVX1016IP-EURO AdderView CATxIP CATx IP 1x16 KVMA over IP Switch

CATX-USB (USB computer access module)  
CATX-USBA (USB computer access module with audio)  
CATX-PS2 (PS2 computer access module)  
CATX-PS2A (PS2 computer access module with audio)  
CATX-SUNA (Computer access module with audio for Sun)

RMK-ALIP Rack mount kit for 1 AdderView CATx per 1U  
RMK-ALIP-DUAL Rack mount kit for 2 AdderView CATx per 1U



## **Kontakt Daten - Anfrage:**

Tel: 02822 33 33 990

E-Mail: [info@bellequip.at](mailto:info@bellequip.at)

Internet: [www.bellequip.at](http://www.bellequip.at)

# Lösungen für

<b>IT, EDV, Rechenzentren, Industrie, Automation, Telekommunikation, Leitstand, Rundfunk, Fernsehen, Werbung</b>		<b>Physikalischer Schutz – Datenschutz IT- Sicherheitsräume</b>
19 Zoll Einbaukonsolen 2 Port KVM Switches 4 Port KVM Switches 8 Port KVM Switches 16 Port KVM Switches KVM over IP Switches Matrix KVM over IP Switches KVM Switches DVI KVM Switches DVI Matrix Switches KVM Extender KVM over IP Extender USB Extender VGA Extender VGA + Audio Extender VGA + Audio + RS232 Extender DVI Extender DVI KVM Extender HDMI Extender DVI Splitter VGA Splitter VGA Video Switches Digital Signage Audio over IP Desktop over IP Line Interaktive USV Anlagen	1p / 1p Online USV Anlagen 3p / 1p Online USV Anlagen 3p / 3p Online USV Anlagen USV Anlagen USV Batterien USV Elektro Verteilung USV Service & Support USV Software USV Anlagen für Rechenzentren ATS Automatic Transfer Switches Konverter CATx Patchkabel LWL Patchkabel Netzwerkschränke Serverschränke Remote I/O Kontakte über IP Remote Power Management Rack Monitoring / Serverraum Überwachung Wireless Communication Mobiles Ethernet / Netzwerk GSM / GPRS / EDGE / UMTS / HSDPA Device Server Secure Console Server Serielle Server USB over IP	Brandfrühesterkennung Brandmelder Brandschutzpaneele Brandschutztüren Brandmeldezentralen Doppelboden / Doppelböden E-Installationstechnik Gaslöschanlagen Hochverfügbarkeitsraum / Hochverfügbarkeitsräume Kabeldurchführungen Klimageräte Leckagenwarnsysteme Netzersatzanlagen Präzisionsklimaschränke Sauerstoffreduzierung Serversafes Sicherheitsfolien Switchbox Videoüberwachung Zutrittssysteme